

Selecting

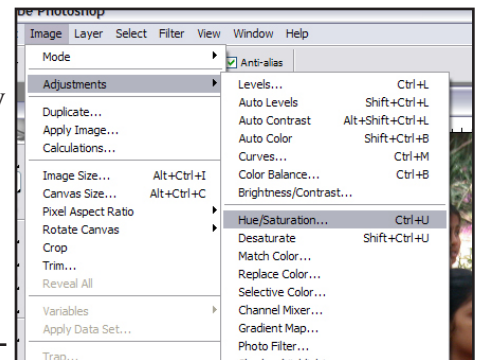
We have now learned many of the main selection tools, I am sorry to inform you that there are still many ways to select objects in Adobe Photoshop. Some are a little more technical so we will not cover them. Like I said before, the main reason Photoshop allows for so many different types of selections is that every image is different. One tool may work for one image but may not work well for another. So although so many different ways to select may seem excessive, it is really one of the most liked functions about Photoshop among seasoned users.

Well, right about now you may be asking, “Why would I want to select something?”. Selecting is actually the answer to many tasks in Photoshop. To change the color of somebody’s hair, eyes, clothes, lips; they must all be selected first before being altered. Now that we have selected this girls dress we will change the color of her dress.

Color changing

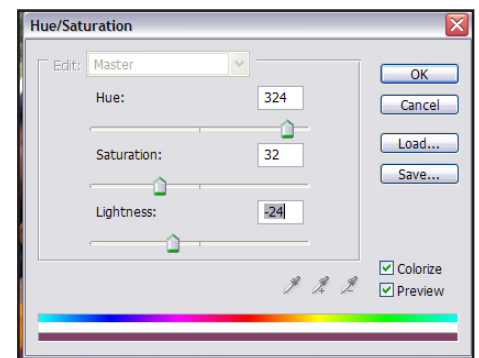
We have selected this dress and so when we go to change colors it will know exactly where to apply these color changes (inside whatever is selected). Another thing to remember is that Hue and Color are basically the same thing. Saturation is just how much of a color is applied and Lightness dictates how much light or lack there of is applied.

1) In Adobe Photoshop’s Menu, click on Image > Adjustments> Hue/Saturation.



A small window will appear with three sliders. The sliders are labeled Hue, Saturation and Lightness.

- 1) First Check the check box at the bottom right that reads “Colorize”
 - 2) Move the Hue slider to the right till you arrive at 324.
 - 3) Move the Saturation slider to the left till you arrive at 32.
 - 4) Move the Lightness slider to the left till you arrive at -24.
- Her dress will become purple.
- 5) Click on the OK button to finalize the color change.



You may repeat these steps with any other selection you make. Moving the sliders around will result in different colors. This would be an ideal way to change the color of anything you would like.

We are now done with this image and you may close this image. The next tool we will learn will be the Clone stamp tool. This next exercise requires no selecting, just to give you a break from selecting for now.